

XML Document

Cannot represent the semantics of

- Key (unique), Keyref (ref validity),
- sequence of sub elements
- Complex type
- occurrences (min, max)

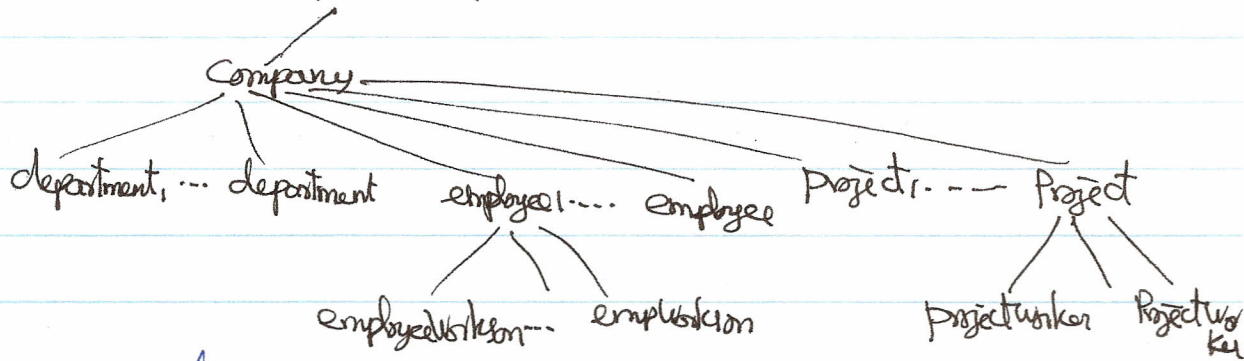
XML Schema (similar DTD and represents all the above features)

is the XML definition for a database.

XML Schema can be used to validate an XML document of the database.

XSD: XML Schema Definition.

e.g. Company DB (Tree structure) ← root.



If there is a cycle in the database schema, duplicate an element in the cycle and remove the cycle.

e.g. University Schema in Ch12.

Company DB.

