

Orchestrating WSRF-based Grid Services

Technical Report FIU-SCIS-2007-04-01

April 2007

Onyeka Ezenwoye, S. Masoud Sadjadi, Ariel Cary, and Michael Robinson

School of Computing and Information Sciences
Florida International University
11200 SW 8th Street
Miami, FL 33199
{oezen001, sadjadi, acary001, mrobi002}@cs.fiu.edu

Abstract. Grid computing aims to create an accessible virtual super-computer by integrating distributed computers to form a parallel infrastructure for processing applications. To enable service-oriented Grid computing, the Grid computing architecture was aligned with current Web service technologies. Thereby making it possible for Grid applications to be exposed as Web services. The WSRF set of specifications standardized the association of state information with Web services (WS-Resource) while providing interfaces for the management of state data. Key to the realization of the benefits of Grid computing is the ability to integrate WS-Resources to create higher-level applications. The Business Process Execution Language (BPEL) is the leading standard for integrating Web services and as such has a natural affinity to the integration of Grid services. In this paper, we share our experience on using BPEL to integrate, create, and manage WS-Resources that implement the factory/instance pattern.

Keywords: BPEL, Grid Computing, WSRF, OGSA-DAI, Grid Service Composition.

1 Introduction

Grid computing promises to harness the resources available on disparate distributed computing environments to create a parallel infrastructure that allows for applications to be processed in a distributed manner. The goal is to create an accessible virtual supercomputer by integrating distributed computers with the use of open standards [1]. To this end, the Open Grid Services Architecture (OGSA) [2] defines an architecture for service-oriented Grid computing that utilizes Web services standards such as XML [3], SOAP [4] and WSDL [5].

Under the OGSA, computational and storage resources are exposed as an extensible set of networked services that can be aggregated to create higher-function applications. These Grid services, which are sometimes transient, adhere to a set of OGSA-defined conventions for creation, lifetime management, discovery and change management [6]. Aligned with these conventions is the Web Services Resource Framework (WSRF). WSRF is a set of specifications that are defined in terms of existing Web services technologies, for modeling and management of stateful resources. The specification defines a set of interfaces that Grid services may implement. These interfaces which address issues like dynamic service creation, lifetime management, notification, and manageability, allow applications to interact with Grid services in standard and interoperable ways [7].

Key to the realization of the benefits of Grid computing is the ability to integrate basic services to create higher-level applications. Workflow languages permit such aggregation of services. With such languages, higher-level application can be modeled as graphs where the nodes represent tasks while the edges represent inter-task dependencies, data flow or flow control. Tasks may be performed by basic services. The Business Process Execution Language (BPEL) [8] has become the leading language for the aggregation of Web services. In this paper, we share our experience in using BPEL to compose WSRF-based Grid services to create a bioinformatics application for protein sequence matching. We show how BPEL can be used to interact with WSRF-based services that implement the factory/instance pattern.

The rest of this paper is structured as follows; in Section 2 we provide some related work, Section 3 covers WSRF and some of its component specifications. Section 4 provides a brief overview of service orchestration and BPEL. In Section 5 we present the bioinformatics application and in Section 6 we show how BPEL is used to integrate Grid services to create the application. Sections 7 and 8 cover the execution environment and conclusion, respectively.

2 Related Work

Duscher [9] present the architecture of an execution environment for mathematical services using Web service technologies. WSRF is used for the architecture and BPEL is used to represent the workflow that specifies the interactions with the mathematical services. The execution environment comprises a mathematical service (GAPService) and a BPEL engine. The GAPService implements both a service and factory interface. A part of the GAPService manages the lifecycle of the instances. This work differs from ours because, although the creation of service instances is done through the BPEL workflow, the discovery and management of those instances is not. Also, their Web services do not execute as part of a Grid environment.

Various works [10, 11] have been done to address the issue of using BPEL to orchestrate Grid services. However, these works do not cover WSRF-based

Grid services and the implied resource pattern. Others [12,13], discuss the issues involved in exposing BPEL processes as WSRF-based Grid services.

3 Web Services Resource Framework

In 2003, the Global Grid Forum¹, a working group for the standardization of Grid computing, released the specification for the Open Grid Services Infrastructure (OGSI). OGSI is a set of conventions and extensions on the use of Web Service Definition Language (WSDL) and XML Schema to enable the modeling and management of stateful Web services. The ultimate goal of the specification is to encourage openness of the Grid infrastructure by aligning the Grid computing model with the emerging Web services architecture. The OGSI specification addresses issues concerning creation and management of the lifetime of instances of services, declaration and inspection of service state data, notification of service state change and standardization of service invocation faults.

In 2004, the Organization for the Advancement of Structured Information Standards (OASIS) refactored the OGSI specification into the Web Services Resource Framework (WSRF). This framework standardizes the concept of Web Services Resource (WS-Resource) [14], which is, the association of a state component with a Web service. This association permits, through *standardized interfaces*, the manipulation of the *named typed* state component as part of the execution of the Web service. This creates the impression of statefulness of that Web service. The stateful component is seen as implicit input in the execution message exchange of the associated Web service (*implied resource pattern*). The term pattern is used because the relationship between the Web service and the stateful resource is defined using a set of conventions on existing Web services technologies [14].

WSRF addresses some of the criticisms [15] of OGSI such as; the specification was too monolithic and did not allow for flexible incremental adoption, extensions to WSDL 1.1 and non-standard use of XML schema meant that OGSI did not work well with existing Web services and XML tooling, OGSI was seen as too object-oriented by coupling the service and the stateful resource it acts upon as one entity. WSRF maintains all the functions of OGSI but coupled with some existing Web services technologies, partitions this functionality into distinct component specifications, namely, *WS-Addressing*, *WS-RenewableReferences*, *WS-ResourceProperties*, *WS-ResourceLifeCycle*, *WS-Notification*, *WS-ServiceGroup* and *WS-BaseFaults*. With this separation, developers can now choose which of the specifications to use. WSRF now supercedes the initial OGSI specification, thereby rendering it obsolete. Figure 1 depicts the relationship between the Web services technologies and the OGSI and WSRF specifications.

An instance of a stateful resource may be created by the use of a WS-Resource factory. This factory is any Web service capable of instantiating the stateful component. The factory implies a use pattern that may be implemented in several

¹ Global Grid Forum is now known as Open Grid Forum

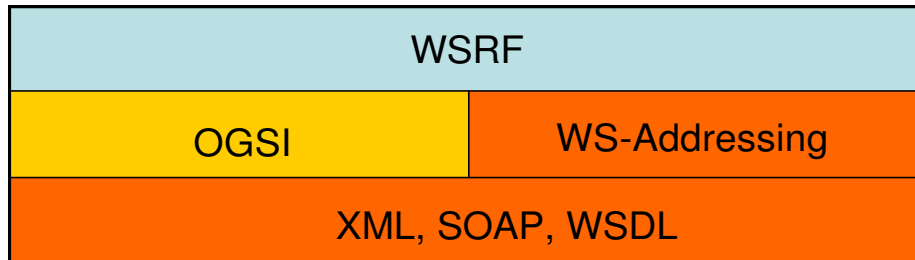


Fig. 1. The relationship between WSRF, OGSi and Web service technologies.

Web service operations. To instantiate a stateful resource, the Web service has to create a new stateful resource, assign an identity to that resource and create the association between the resource and its Web service. The factory returns an *endpoint reference* containing the identifier that refers to the new stateful resource.

A thorough description of the component specifications of WSRF is beyond the scope of this paper. However, a brief overview of *WS-ResourceProperties* and *WS-Addressing* helps to provide context for the material that follows.

3.1 Web Services Resource Properties

Resource properties refers to the individual components of a WS-Resource state. This state is described in a WS-Resource properties document. Each resource property is represented as an XML element in this document. The *WS-ResourceProperties* specification standardizes the way properties of a resource can be defined as part of a Web service interface. It also defines mechanisms for querying and modifying those resource properties through Web service interfaces. When defining the interface to a Web service, the portType (WSDL 1.1) can be associated with at most one resource property document, any Web service that implements this portType is therefore associated with the stateful resource defined by the resource property document [14]. Service users may determine the resource type and ways to access or modify its properties by retrieving the WSDL definition of the associated Web service.

3.2 Web Services Addressing

The Web services Addressing (WS-Addressing) [16] specification standardizes the endpoint reference construct. The specification was designed to provide an interoperable and transport-neutral way of encoding addressing information. This enables messaging systems to support message transmission through networks that include processing nodes such as endpoint managers, firewalls, and gateways. WS-Addressing defines two constructs to convey the necessary information, they are; endpoint reference and message information header.

Endpoint Reference The identifier for a stateful resource may be dynamically associated with a Web service during message exchange execution. This dynamic association eliminates the need to know the identity and location of the resource encapsulated by the Web service. The identifier is encoded in an Endpoint Reference (EPR) and used to address a target WS-Resource. An Endpoint Reference [16] is an XML structure that encapsulates the information needed to route messages to their destination Web service. This Endpoint References may be returned by the factory that creates a new WS-Resource and may contain, in addition to the address, other metadata such as *reference properties*. It is within the reference properties that the key that identifies a resource instance is encapsulated. Figure 2 shows a WS-Addressing endpoint reference as used within the conventions of WS-Resource. The endpoint reference contains two components; (1) The *Address* component encapsulates the network transport-specific address of the Web service (2) the *ReferenceProperties* component contains a stateful resource identifier.

```
<EndpointReference>
  <Address>http://host/wsrf/Service</Address>
  <ReferenceProperties>
    <ResourceKey>8807d620</ResourceKey>
  </ReferenceProperties>
</EndpointReference>
```

Fig. 2. A WS-Resource-qualified Endpoint Reference.

Message Information Header Message information headers carry end-to-end message characteristics including addressing for source and destination endpoints as well as message identity [14]. A request message directed to a service using an endpoint reference must include the stateful resource identifier. Since WS-Addressing specifies that ReferenceProperties elements must appear as SOAP header elements in the message, the stateful resource identifier is mapped to this message information header. Figure 3 illustrates the use of a SOAP header to propagate the stateful resource identifier. The target Web service will extract this identifier from the SOAP message and use it to locate the stateful resource needed for the execution of the request. The **<Action>** element of the header identifies the verb of the message.

4 Service Orchestration

Service-Oriented Architecture implies that distributed software services can be loosely integrated through clearly defined interfaces. This integration is often achieved through service *orchestration* or *choreography* [17]. In service *orchestration*, integration is achieved through a central application. This application (usually an executable workflow) models the interaction between the integrated

```

<Envelope>
  <Header>
    <MessageID>...</MessageID>
    <To>http://host/wsrf/Service</To>
    <ResourceKey>8807d620</ResourceKey>
    <Action>...</Action>
    <From>...</From>
  </Header>
  <Body>
    ...
  </Body>
</Envelope>

```

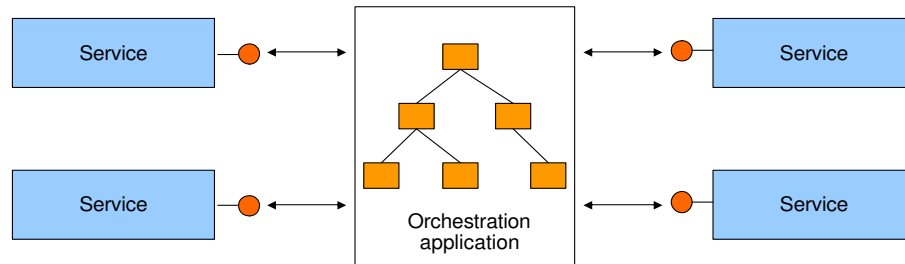
Fig. 3. A SOAP request message carrying a resource identifier in its information header.

services. The application is aware of the interfaces of the services and controls their execution order and message exchange. In service *choreography*, there may not exist a central controlling process, rather interacting services are aware of each other and each service knows of its participation in the message exchanges of the interaction. Figure 4 illustrates the difference between orchestration and choreography. To create service orchestration, a workflow language such as Business Process Execution Language (BPEL) is often used.

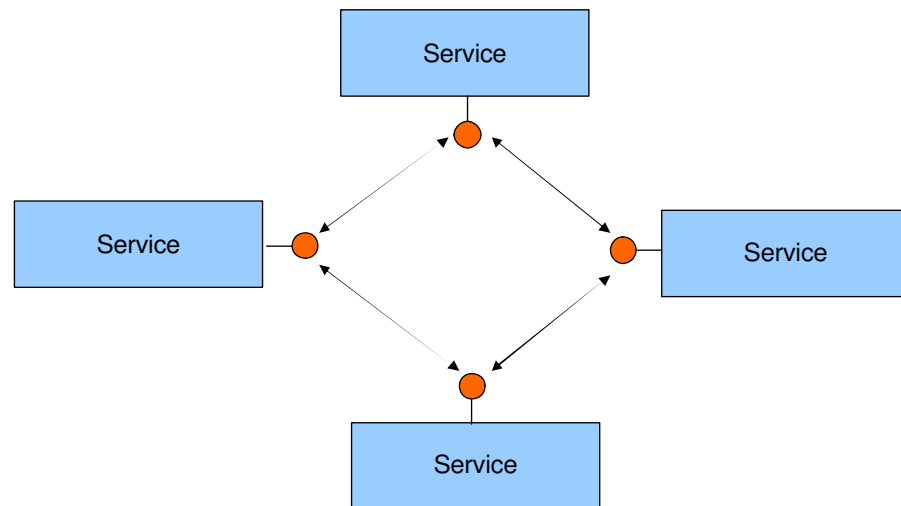
4.1 Business Process Execution Language - BPEL

BPEL has become the leading standard for Web service orchestration. With BPEL, Web services can be integrated, using some XML-grammar, to create a higher-level application (business process). The XML-grammar that defines a BPEL process is interpreted and executed by an orchestration engine which exposes the process as a Web service. BPEL, which is built on XML-Schema, WSDL and XPath, weaves together *basic* and *structured* activities to create the logic of the process. BPEL provides many constructs for the management of process activities, including loops, conditional branching, fault handling and event handling (such as timeout). It allows for activities to execute sequentially or in parallel.

A basic activity is a primitive BPEL activity that performs some atomic action that interacts with some entity (partner) outside of the BPEL process. These activities include the `invoke` activity that performs an operation on an external Web service partner. Some others are, the `receive` which waits for external input from a partner and the `reply` activity which send back a message to the partner that invoked the `receive` operation. Structured activities are those activities that derived from a combination of several activities. Structured activities aim to specify the order in which the combined activities execute. They provide support for asynchronous interactions which is important for efficiency and scalability. For instance, activities that are meant to execute concurrently or sequentially are enclosed in `flow` and `sequence` tags respectively. Other structure activities include `switch` for conditional branching, `pick` for alternative choices and a `while` looping construct. Structured activities can be nested and the execution order between blocks of activities can be defined with the use of links.



(a) Service Orchestration.



(b) Service Choreography.

Legend:


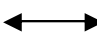
 Service Interface
  Message flow

Fig. 4.

BPEL processes can manage exceptions generated from service invocations. Faults can be generated externally by invoked Web service partners or internally within the process. Faults are caught with code defined inside fault handlers. BPEL activities can be grouped into a single transaction with the `scope` tag. The `scope` container provides a context for a subset of activities. It can contain fault and event handler for activities nested within it. The `scope` allows the activities enclosed within it to be managed as logical unit.

5 WSRF Services for Bioinformatics

With the need for scientists to create application that integrate multiple Grids service and the alignment of the Grid service paradigm with Web services technologies, BPEL is now poised to play an important role in the orchestration of Grid services. Today, computer science is being applied to biology creating the field of Bioinformatics. In Bioinformatics one of the most critical jobs is Computational Biology, which is, the analysis of biological data. The specific application we use in this case to show the use of BPEL in the orchestration of WSRF-based Grid services, is a Grid application for computational biology. This application attempts to match protein sequences [18]. This matching of sequences can be computationally intensive depending on the size of the sequences processed. Figure 5 shows the high-level architecture of the application. Below, we explain some of the components of this architecture.

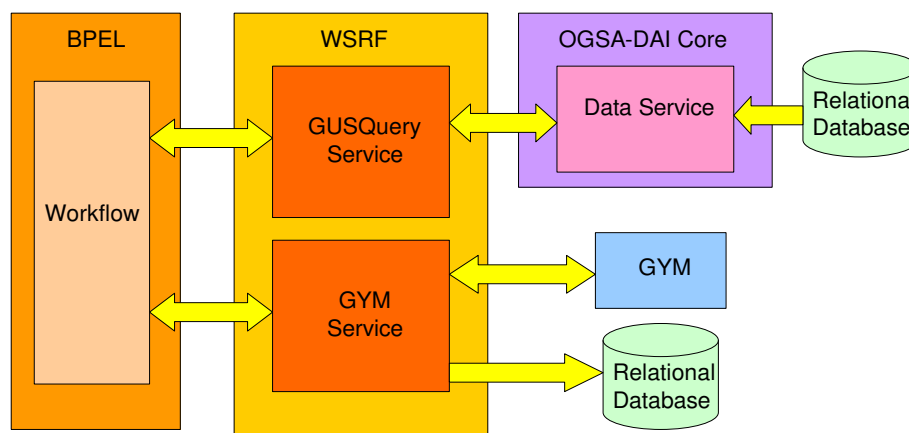


Fig. 5. The high-level architecture of the application.

OGSA-DAI Biological data is stored in a variety of formats such as flat files, relational databases, XML repositories, etc. Some of these data repositories are

platform or language dependent, which makes it difficult to integrate in new environments. So, there is a need to seamlessly access these disparate sources of information and integrate them into the Grid for further processing. OGSA-DAI [19] is middleware that facilitates access to and integration of data from separate sources on the Grid. It complies with the OGSA standard and makes data sources accessible via Web services (Data services).

GYM is a biological application for processing protein data sequences. Here, GYM is used to detect Helix-Turn-Helix (HTH) Motifs in protein sequences. Proteins with HTH motifs are usually responsible for binding with DNA [18] The GYM program is a legacy application written in C. It takes as input, multiple records of protein sequence data. GYM instances are run on Grid nodes to process the sequences available from the sources.

GUSQuery Service This is a WS-Resource. The resource in this case is the protein sequence data obtained from an OGSA-DAI data service. This service contains a search method which takes as input a range of sequences and the location of the data service through which to get those sequences. In adherence to the WSRF specification, this service is accompanied by a *factory* service. The factory service, called *GUSQueryFactory*, contains a create method which creates an instance of the GUSQuery Service. The factory service returns an endpoint reference which identifies the created instance.

GYM Service This is also a WS-Resource. It contains a method which takes as input a range of protein sequence data. This data is then processed locally using a GYM application. The result from the GYM application is stored in a database. This service also has a factory service called *GymFactory*.

Workflow This BPEL process weaves together the interaction between the GUSQuery service and the GYM service. This executable workflow which is exposed as a Web service, is also responsible for creating the instances of those services through their respective factory services. It uses the endpoint references returned by those factories to identify the specific service instances. It passes the protein sequence data from the GUSQuery service to the GYM service. Figure 6 is a sequence diagram that shows the interaction between the workflow and the services.

As stated in Section 4, BPEL is an orchestration language and by that, implies a centralized architecture. Thus, all message and data exchange between collaborating services go through the BPEL process. Although this presents a limitation, especially in a Grid environment where it might be necessary to move large amounts of data, it is possible to implement a BPEL process that combines service orchestration and choreography. To achieve this hybrid, rather move large amounts of data through the BPEL process, the reference to the data is passed instead. The services in the collaboration can then transfer the data amongst themselves using applications such as GridFTP.

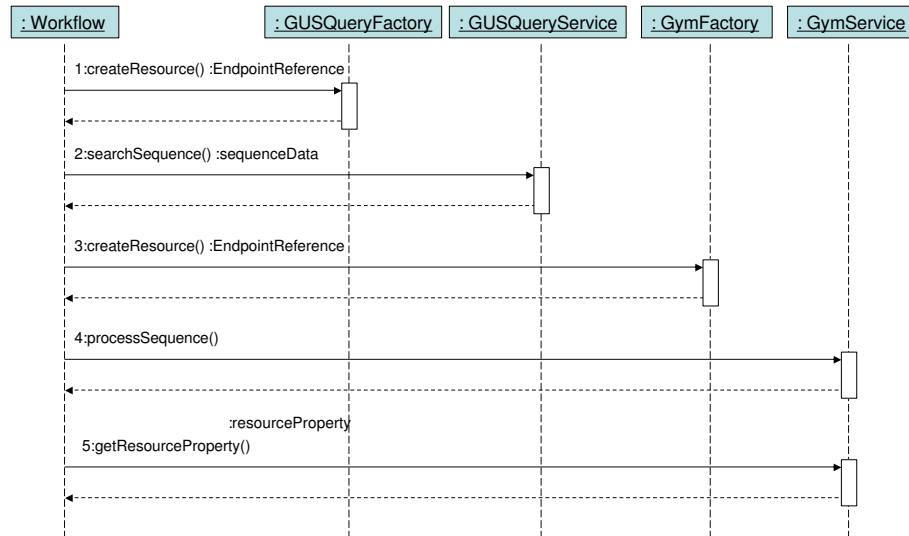


Fig. 6. The sequence diagram for workflow.

6 WSRF with BPEL

To fully immerse BPEL as part of any Grid environment, it may be necessary, not only to use BPEL to integrate WSRF-based Grid services but also to expose the BPEL process itself as a WS-Resource. Although trying to expose a BPEL process as a WS-Resource does present some obstacles, since WSRF is not considered in the current specification, it is achievable through language extensions [13] [12] and mediators. In this work, BPEL is used solely for the integration of WSRF-based Grid services.

In this section, we show how the interaction with the WSRF-based services (shown in figure 6) is achieved in BPEL. The details about the definition of the services themselves, is outside the scope of this paper. Where necessary, some code have been simplified for brevity.

6.1 Partner links

The partner links define the different services that interact with the BPEL process. The `<partnerLinks>` section in the code listing below shows the four services that interact with the workflow.

```

<partnerLinks>
  ...
  <partnerLink name="gym"
    partnerLinkType="GymPortTypeLink"
    partnerRole="GymPortTypeProvider"/>
  <partnerLink name="GusFactory"
    partnerLinkType="GusFactoryPortTypeLink"
    partnerRole="GusFactoryPortTypeProvider"/>
  <partnerLink name="gus"
    partnerLinkType="GUSQueryPortTypeLink"
    partnerRole="GUSQueryPortTypeProvider"/>
  <partnerLink name="GymFactory"
    partnerLinkType="GymFactoryPortTypeLink"
    partnerRole="GymFactoryPortTypeProvider"/>
</partnerLinks>

```

The partnerLinks here correspond to the GYM service (gym), as well as the factory for that service (GymFactory), the GUSQuery service (gus) and its factory service (GusFactory). The partner link type and a role name in each partner link identifies the functionality that must be provided by the partner services, that is, the interface (portType) that the partners need to implement [20]

6.2 Variables

The code below shows some of the message variables used by the BPEL process. The variables are defined in terms of WSDL message types, XML Schema simple types, or XML Schema elements. These variables are used in messages exchanged with partner services.

```

<variables>
  ...
  <!-- some variables GUSQuery service & factory -->
  <variable messageType="ns4:CreateResourceRequest"
    name="CreateResourceRequest"/>
  <variable messageType="ns4:CreateResourceResponse"
    name="CreateResourceResponse"/>
  <variable messageType="ns2:searchSequenceRequest"
    name="gsuRequest"/>
  <variable messageType="ns2:searchSequenceResponse"
    name="gusResponse"/>
  <!-- some variables GYM service & factory -->
  <variable messageType="ns5:GetResourcePropertyRequest"
    name="GetResourcePropertyRequest"/>
  <variable messageType="ns5:GetResourcePropertyResponse"
    name="GetResourcePropertyResponse"/>
  <!-- variable for endpoint reference -->
  <variable element="wsa:EndpointReference"
    name="DynamicEndpointRef"/>
</variables>

```

6.3 Creating a Web service instance

Creating a new Web service resource instance involves making a call to the *createResource* operation of designated factory service. This is achieved by using BPEL's service invocation mechanism. The `<invoke>` construct allows a BPEL process to invoke a one-way or request-response operation on a portType (interface) offered by a partner service [20]. The code listing below shows the invocation to the `createResource` operation of the GUSQuery factory service.

```

<invoke
  name="InvokeGusFactory"
  partnerLink="GusFactory"
  portType="GusFactoryPortType">
  operation="createResource"
  inputVariable="CreateResourceRequest"
  outputVariable="CreateResourceResponse"
</invoke>

```

The invoke activity which makes a synchronous call to the factory service, contains the `portType` of the operation as well as the `inputVariable` and `outputVariable` variables. If the invocation is successful, the `outputVariable` will contain the endpoint reference of the created instance. Below is an example SOAP message returned after a successful invocation to the factory service.

```

<soapenv:Envelope>
  ...
  <soapenv:Body>
    <createResourceResponse xmlns="...">
      <wsa:EndpointReference>
        <wsa:Address>
          http://.../wsrf/services/GUSQueryService
        </wsa:Address>
        <wsa:ReferenceProperties>
          <ns1:GUSQueryResourceKey xmlns:ns1="...">
            8807d620-acb3-11db-9abe-b9e88f054119
          </ns1:GUSQueryResourceKey>
        </wsa:ReferenceProperties>
        ...
      </wsa:EndpointReference>
    </createResourceResponse>
  </soapenv:Body>
</soapenv:Envelope>

```

In this message can be seen the `EndpointReference` element which contains the `Address` and resource key (`GUSQueryResourceKey`) to the created service instance.

6.4 Invoking the Web service instance

Since the identifier of a WS-Resource instance is obtained at runtime, any message to this instance must contain the resource identifier in its SOAP header (as described in Section 3.2). Note that, although the instance of the service is only known at runtime, the service would have been declared as a partner at development time (see Section 6.1). The BPEL specification allows for the actual service endpoint of a partner to be dynamically defined within the process. The specification however, does not make provisions for how dynamically obtained information such as resource identifiers can be define for those endpoints. This type of information needs to be mapped to the headers of the SOAP messages for the target endpoint. Because the BPEL specification is deficient in this regard, the method mapping desired information to SOAP headers depends on the specific implementation of the BPEL execution engine. The method me describe below is suited for the ActiveBPEL Engine (see Section 7.2)

To dynamically associate an endpoint reference to a service, the WS-Addressing endpoint reference [16] is used to represent the dynamic data required to describe a partner service endpoint [20]. To achieve the association of a partner

with its service endpoint, an endpoint reference has to be assigned to the declared partner link within the process. As shown below, we use the copy operation of an assignment activity to copy *literally* an endpoint reference to a variable (`DynamicEndpointRef`).

```
<copy>
  <from>
    <wsa:EndpointReference xmlns:s="...">
      <wsa:Address/>
      <wsa:ServiceName PortName="GUSQueryPortType">
        s:GUSQueryService
      </wsa:ServiceName>
      <wsa:ReferenceProperties>
        <!--Elements to be mapped to the SOAP Header-->
        <wsa:Action/>
        <wsa:To/>
        <wsa:From/>
        <ns2:GUSQueryResourceKey/>
      </wsa:ReferenceProperties>
    </wsa:EndpointReference>
  </from>
  <to variable="DynamicEndpointRef"/>
</copy>
```

This endpoint reference contains an `Address` element that will hold the service endpoint address. The `ReferenceProperties` of the endpoint reference contains some WS-Addressing message information header elements and a `GUSQueryResourceKey` element. The `GUSQueryResourceKey` element will hold the resource identifier for the WS-Resource. Values for the endpoint reference will be assigned at run time. The message information header elements and the `GUSQueryResourceKey` will be mapped, by the BPEL engine to the invocation SOAP message for the partner Web service, which in this case is `GUSQueryService`.

The WS-Resource identifier information required for the endpoint reference is copied from the reply message of their respective factory services. The copy operation below copies the service endpoint address from the factory response message (`CreateResourceResponse`) to the endpoint variable (`DynamicEndpointRef`). The `query` attribute of the `<from>` and `<to>` clauses are XPath [21] queries. XPath queries are used to select a field within a source or target variable part.

```
<copy>
  <from variable="CreateResourceResponse"
    part="response"
    query="/ns4:createResourceResponse
      /wsa:EndpointReference/wsa:Address"/>
  <to variable="DynamicEndpointRef"
    query="/wsa:EndpointReference
      /wsa:ReferenceProperties/wsa:To"/>
</copy>
```

A similar mechanism is used to assign the service endpoint address to the `<wsa:Address>` property of the endpoint reference variable. The BPEL engine needs this address to determine the destination of the invocation message for the service. The `<wsa:To>` component of the message information header is used by the service to determine the endpoint of the required service instance. Here, we use the same address returned by the factory because for this application, the address of a service and its instance are the same.

```

<copy>
  <from variable="CreateResourceResponse"
    part="response"
    query="/ns4:createResourceResponse
      /wsa:EndpointReference/wsa:Address"/>
  <to variable="DynamicEndpointRef"
    query="/wsa:EndpointReference
      /wsa:Address"/>
</copy>

```

The name of the operation to be invoked on the WS-Resource instance needs to be assigned to the `Action` part of the SOAP header. To achieve this, an XPath expression to write the name as a string to the endpoint reference variable. An XPath expression, which is specified in an expression attribute in the `<from>` clause, is used to indicate a value to be stored in a variable. The string that represents the operation, is in the form of a URI that includes the target namespace of the WSDL document for the WS-Resource and the associated portType. Thus in the listing below, `http://GUSQueryService_instance` is the namespace, `GUSQueryPortType` is the portType and `searchSequence` is the operation.

```

<copy>
  <from expression="string('
    http://GUSQueryService_instance
    /GUSQueryPortType/searchSequence')"/>
  <to variable="DynamicEndpointRef"
    query="/wsa:EndpointReference
      /wsa:ReferenceProperties/wsa:Action" />
</copy>

```

The listing below shows how we use the copy operation and XPath queries to copy the resource instance key (`GUSQueryResourceKey`) from the factory response message to the endpoint reference variable.

```

<copy>
  <from variable="CreateResourceResponse" part="response"
    query="/ns4:createResourceResponse
      /wsa:EndpointReference/wsa:ReferenceProperties
      /ns2:GUSQueryResourceKey"/>
  <to variable="DynamicEndpointRef"
    query="/wsa:EndpointReference/wsa:ReferenceProperties
      /ns2:GUSQueryResourceKey"/>
</copy>

```

The `<wsa:From>` property of the message information header identifies the source of the message, this property can be set with the WS-Addressing "anonymous" endpoint URI [16]. This anonymous endpoint URI can be used because the invocation to the resource instance is synchronous in this case and the underlying message layer takes care of delivering replies to the source.

```

<copy>
  <from>
    <From xmlns="...">
      <Address>
        http://schemas.xmlsoap.org/ws/2004/03
          /addressing/role/anonymous
      </Address>
    </From>
  </from>
  <to variable="DynamicEndpointRef"
    query="/wsa:EndpointReference
      /wsa:ReferenceProperties/wsa:From"/>
</copy>

```

After assigning values to all the necessary parts of the endpoint reference variable, an association is now made with this variable and the desired partner link. As shown below, a copy operation is used to copy the endpoint reference variable (`DynamicEndpointRef`) to the predefined partner link. An invocation can now be made to the Web service (WS-Resource) partner (GUSQuery service). The information carried in the SOAP message header of the invocation is used to identify the appropriate instance of this service.

```

<copy>
  <from variable="DynamicEndpointRef"/>
  <to partnerLink="gus"/>
</copy>

```

6.5 Accessing resource properties

The *WS-ResourceProperties* specification includes a set of port types for querying and modifying the state of a WS-Resource. The Gym service (Section 5) implements the *GetResourceProperty* port type of this specification. We use this port type and its operation (also called *GetResourceProperty*) to access the result from the Gym application (Section 5). Prior to invoking the *GetResourceProperty* operation, some initialization needs to be made to the variable of its input message. This initialization includes the name of the resource property to which we want to retrieve the value. In our case, this resource property is called *result*. The listing below shows how we initialize the *GetResourcePropertyRequest* in the BPEL process. The `<from>` clause includes (as attributes) the target namespace of the WSDL documents that contain the definitions for the *GetResourceProperty* port type and the *result* resource property.

```

<copy>
  <from>
    <GetResourceProperty
      xmlns="http://docs.oasis-open.org/wsrf/2004/06
        /wsrf-WS-ResourceProperties-1.2-draft-01.xsd"
      xmlns:ns3="http://GymService_instance">
      ns3:result
    </GetResourceProperty>
  </from>
  <to variable="GetResourcePropertyRequest"
    part="GetResourcePropertyRequest"/>
</copy>

```

The *WS-ResourceProperties* specification also includes the *GetMultipleResourceProperty* port type for retrieving the values of multiple resource properties. To make an invocation the operation of this port type, the variable message initialization must include the list of all the resources properties, each encapsulated within a `</ResourceProperty>` element.

```
<copy>
  <from>
    <GetMultipleResourceProperty
      xmlns="http://docs.oasis-open.org/wsrf/2004/06
        /wsrf-WS-ResourceProperties-1.2-draft-01.xsd">
      <ResourceProperty
        xmlns:ns3="http://GymService_instance">
        ns3:result
      </ResourceProperty>
      <ResourceProperty xmlns:ns1="...">
        ...
      </ResourceProperty>
    </GetMultipleResourceProperty>
  </from>
  <to .../>
</copy>
```

Because we are trying to access the resource properties of a WS-Resource instance, assignments need to be made to all parts of the message header necessary for identifying the instance. The way to do this is described in Section 6.4, the only difference now is in the URI that specifies the verb of the invocation message.

```
<copy>
  <from expression="string('http://docs.oasis-open.org
    /wsrf/2004/06/wsrf-WS-ResourceProperties
    /GetResourceProperty')"/>
  <to variable="DynamicEndpointRef"
    query="/wsa:EndpointReference
    /wsa:ReferenceProperties/wsa:Action"/>
</copy>
```

Although we do not implement all the WSRF port types, the examples shown above is sufficient to enable the orchestration of WSRF-based services that implement the factory/instance pattern.

7 Execution Environment

The Grid service that make up our application are deployed under the Globus Toolkit version 4 (GT4). The BPEL engine we use is AcitveBpel version 3.0 The sections below present a brief overview of these infrastructures.

7.1 The Globus toolkit

The Globus Toolkit is an open source toolkit for building Grids. Version 4.0 of this toolkit implements the WSRF specification. The software is a set of components that can be used to develop Grid applications. The toolkit includes

software services and libraries that address issues like resource monitoring, discovery, management, security, data management, fault detection, etc. It allows users to access remote resources as if they were located locally. Globus Toolkit has become the de facto standard for building Grid solutions

7.2 The ActiveBPEL engine

The ActiveBPEL engine is a Java-based open source implementation of a BPEL engine. It reads BPEL process definitions (and WSDL files) and exposed the BPEL process as a Web service. Incoming messages may trigger start activities which causes the engine to create new instances of the process. The engine manages persistence, queues, alarms, and other execution details on behalf of the process. The version of ActiveBPEL engine we used runs under an Apache Tomcat servlet container.

8 Conclusion

We showed the use of BPEL as platform for integrating WSRF-based Grid services. The services are integrated to create a Bioinformatics application that is used to detect Helix-Turn-Helix motifs in protein sequences. The integrated WSRF services implement the factor/instance pattern and we have shown how BPEL can be used to create, discover and manage WS-Resource instances. The BPEL specification does not make provisions for how dynamically obtained information such as resource identifiers, usernames and passwords can be defined endpoint references. This method of achieving this is left open to the implementation of the various BPEL engines. There is a need for standardization in this regards for BPEL process to remain portable and assume its place as the language for orchestrating Grid services.

References

1. Foster, I., Kesselman, C., Tuecke, S.: The anatomy of the Grid: Enabling scalable virtual organizations. *Lecture Notes in Computer Science* **2150** (2001)
2. : The open grid services architecture <http://www.globus.org/ogsa/>.
3. Yergeau, F., Bray, T., Paoli, J., Sperberg-McQueen, C.M., Maler, E.: Extensible Markup Language (XML) 1.0 (Third Edition). W3C. (February 2004)
4. M. Gudgin et al.: SOAP Version 1.2. W3C. 1.2 edn. (2003)
5. R. Chinnici et al.: Web Services Description Language (WSDL) Version 2.0. W3C. 2.0 edn. (March 2004)
6. Foster, I., Kesselman, C., Nick, J.M., Tuecke, S.: Grid services for distributed system integration. *Computer* **35**(6) (2002) 37–46
7. : Web services resource framework <http://www.globus.org/wsrf/>.
8. Weerawarana, S., Curbera, F.: Business process with BPEL4WS: Understanding. Online article (2002)
9. Duscher, A.: An execution environment for mathematical services based on WSRF and BPEL. Technical report, Research Institute for Symbolic Computation, Johannes Kepler University, Linz, Austria (December 2005)

10. Kuo-Ming Chao, Muhammad Younas, N.G.: BPEL4WS-based coordination of grid services in cooperative design. *Computers in Industry* **57** (2006) 778–786
11. Emmerich, W., Butchart, B., Chen, L., Wassermann, B., Price, S.L.: Grid service orchestration using the business process execution language BPEL. *Journal of Grid Computing* **3**(3-4) (2005) 283–304
12. Slominski, A.: On using BPEL extensibility to implement OGSI and WSRF grid workflows. In: GGF10 Workshop on Workflow in Grid Systems, Berlin, Germany (March 2004)
13. Leymann, F.: Choreography for the grid: towards fitting BPEL to the resource framework: Research articles. *Concurr. Comput. : Pract. Exper.* **18**(10) (2006) 1201–1217
14. Foster, I., Frey, J., Graham, S., Tuecke, S., Czajkowski, K., Ferguson, D., Leymann, F., Nally, M., Sedukhin, I., Snelling, D., Storey, T., Vambenepe, W., Weerawaran, S.: Modeling stateful resources with Web services. (March 2004)
15. Czajkowski, K., Ferguson, D., Foster, I., Frey, J., Graham, S., Maguire, T., Snelling, D., Tuecke, S.: From OGSI to WS-Resource framework: Refactoring and evolution. (March 2004)
16. : Web services addressing (WS-Addressing) (August 2004) <http://www.w3.org/Submission/ws-addressing/>.
17. Peltz, C.: Web services orchestration and choreography. *IEEE Computer* **36**(10) (2003) 44–52
18. Narasimhan, G., Bu, C., Gao, Y., Wang, X., Xu, N., Mathee, K.: Mining for motifs in protein sequences. *Journal of Computational Biology* **9**(5) (2002) 707–720
19. : The OGSA-DAI project <http://www.ogsadai.org.uk/>.
20. Andrews, T., Curbers, F., Dholakia, H., Golland, Y., Klein, J., Leymann, F., Liu, K., Roller, D., Smith, D., Thattee, S., Trickovic, I., Weerawarana, S.: Business process execution language for web services version 1.1. (May 2003)
21. : Xml path language (XPath) <http://www.w3.org/TR/xpath>.